



ASLA VERMONT

Visual Quality
Very Low (1)
Low (2)
Moderate (3)
High (4)
Very High (5)
Based on the combination of natural
area and land cover ratings.



2020 VTASLA VIRTUAL CHAPTER AWARDS


VICTOR STANLEY
Create a timeless moment.®
JNILOCK
DESIGNED TO CONNECT
landscapeforms

SPRING '21 NEWSLETTER - AWARDS

Thank you to our 2021 Sponsors!!!

GRANITE SPONSOR



VICTOR STANLEY™

Create a timeless moment.®

MARBLE SPONSOR



BLUESTONE SPONSOR



PANTON SPONSOR





PRESIDENT'S MESSAGE

TOM HAND, ASLA
VTASLA CHAPTER PRESIDENT

Welcome to VTASLA's Spring 2021 Chapter Newsletter. This edition is entirely dedicated to our 2020 Chapter Award Winners providing an in-depth look at the winning projects in landscape architectural design, planning, research, and analysis. This impressive collection of projects garnered two Awards of Excellence, four Honor Awards, and nine Merit Awards. The projects spanned every aspect of work that we do as landscape architects- such as the large-scale historic restoration project at Jackson Park in Chicago by Heritage Landscapes to studying the canopy health and developing a tree master plan for Chester Village by Terrigenous. The projects were fresh, creative, impactful, and expertly crafted. The caliber of the work and the awards they received is a testament to the quality and importance of the work that we do as landscape architects in Vermont and across the nation.

The Chapter Executive Board, along with the Awards Committee has made a point to combine a celebration of the 2021 World Landscape Architecture Month with a celebration of all the award-winning projects. From social media, news releases and announcements, to this newsletter- promoting the work of our members has been a primary focus. In mid-April, we all came together- virtually- to celebrate each other's work at the Chapter Awards Ceremony. Immediate Past President Wendy Miller was on hand to present the awards and it was a great opportunity to reconnect.

Like all our events, the Chapter Awards Ceremony reminded me of how important it is for us to come together as a group of professionals and friends to share in the community of work that we do. Just today at the Spring Chapter President's Council meetings we discussed the importance of gathering professionally and socially to share our ideas and work to advance the profession. Yet, that is the one thing that we have all been missing over the past year-connection.

I am optimistic that our immediate future will involve a return to some degree of normalcy, and we will return to social outings, lectures, and project tours. There are a lot of talented professionals in our state practicing a lot of impressive work. As Patricia so eloquently demanded at the end of the awards ceremony "There is a lot of great work being done in this state not being submitted for awards." I challenge you to submit more projects and elevate awareness of your work to both colleagues and the public. But don't wait to prepare- the 2022 Chapter Awards are right around the corner!

For now, please enjoy this collection of our 2020 Award Winners.

Cheers!

A handwritten signature in black ink, consisting of the letters 'TH' followed by a long horizontal line.

Tom Hand

VT ASLA CHAPTER AWARDS

THE 2020 AWARDS

The Vermont Chapter of the American Society of Landscape Architects (VTASLA) recently announced the fifteen winners of its biennial awards program. The program honors works in landscape architectural design, planning, communications, or research completed by members of VTASLA or for projects completed within Vermont by out-of-state ASLA members. The awards were judged by an impartial jury of five landscape architects from Alaska.

The Vermont ASLA Awards Program is managed under the Vermont Chapter of the American Society for Landscape Architects, a nonprofit 501(c)6 organization established in 2000. Founded in 1899, The American Society of Landscape Architects, ASLA, is the national professional association for landscape architects, representing more than 14,000 members nationwide. Landscape architecture is a comprehensive discipline of land analysis, planning, design, management, preservation, and rehabilitation. ASLA promotes the landscape architecture profession and advances the practice through advocacy, education, communication, and fellowship. Learn more about landscape architecture online at www.asla.org.

2020 VTASLA DESIGN AWARDS

THANK YOU

To our generous and thoughtful jury members from ASLA ALASKA.

To our event and chapter Sponsors.

To our hard-working Awards Committee, Michael Buscher and Beau Doucette.

To all firms who submitted to the 2020 awards.

STAY CONNECTED WITH VTASLA

Interested in becoming or renewing your VT Chapter membership? Contact Tom Hand, membership committee chair at thand@segroup.com

For sponsors, please contact Michael Buscher, Treasurer at mike@tjboyle.com

Visit our website: <http://www.vtasla.org/>

Follow us on facebook: <https://www.facebook.com/vtasla/>

Find us on instagram: <https://www.instagram.com/vermontasla/>



2020 VTASLA DESIGN AWARDS CEREMONY

The 2020 VTASLA Project Awards Ceremony took place on Thursday, April 15 via Zoom call. More than 50 people attended to not only collect awards for their completed projects, but also to help celebrate all the quality work that has been completed in the state of Vermont. Special guest speakers included Wendy Miller, the immediate past president of ASLA National, and Andrew Hosmer, representing the VTASLA Granite Level sponsor Victor Stanley.

Wendy shared exciting news from ASLA on topics and events focused toward increasing representation of BIPOC influence in Landscape Architecture and the ever increasing severity and challenges of global warming. Each award-winning project had an introduction by Wendy, followed by a short video and some closing words from a representative of the responsible firms.



SWANEY LIGHTING ASSOCIATES, INC.

Manufacturers Representative Serving Vermont, New Hampshire, Maine
www.Swaneylighting.com Office 207-883-7100
info@swaneylighting.com
Vermont - Chad@swaneylighting.com 802-363-0621

VT ASLA 2020 CHAPTER AWARDS: LANDSCAPE ARCHITECTURAL DESIGN

AWARD OF EXCELLENCE:

JACKSON PARK HABITAT AND HISTORY INTEGRATION FOR COMMUNITY ASSET RENEWAL
Heritage Landscapes LLC, Preservation Landscape Architects & Planners (Charlotte)

HONOR AWARDS:

MODERN RETREAT

Wagner Hodgson Landscape Architecture (Burlington)

VERMONT AGRICULTURAL & ENVIRONMENTAL LABORATORY

Wagner Hodgson Landscape Architecture (Burlington)

NIAGARA FALLS STATE PARK RIVERWAY

Heritage Landscapes LLC, Preservation Landscape Architects & Planners (Charlotte)

MERIT AWARDS:

BLUE MOON FARM

Julie Moir Messervy Design Studio (Bellows Falls)

LOTTERY HILL

Jack Rossi, Landscape Architecture (Woodstock)

LAKE GEORGE RESIDENCE

T.J. Boyle Associates (Burlington)

AERIE POINT RESIDENCE

Wagner Hodgson Landscape Architecture (Burlington)

MONTPELIER UNION ELEMENTARY SCHOOL PLAYGROUND

SE Group (Burlington)

SWITCHBACK MODERN

Wagner Hodgson Landscape Architecture (Burlington)

VT ASLA 2020 CHAPTER AWARDS: PLANNING, RESEARCH AND ANALYSIS

AWARD OF EXCELLENCE:

PLANTING FIELDS CULTURAL LANDSCAPE REPORT

Heritage Landscapes LLC, Preservation Landscape Architects & Planners (Charlotte)

HONOR AWARDS:

YALE CAMPUS FARRAND CULTURAL LANDSCAPE STUDY

Heritage Landscapes LLC, Preservation Landscape Architects & Planners (Charlotte)

MERIT AWARDS:

CHESTER VILLAGE CANOPY MANAGEMENT PLAN

Terrigenous Landscape Architecture (Chester)

ENOSBURG FALLS VITAL VILLAGE MASTER PLAN

SE Group (Burlington)

NORTHERN PASS VISUAL IMPACT ASSESSMENT

T.J. Boyle Associates (Burlington)



HERITAGE LANDSCAPES LLC, PRESERVATION LANDSCAPE ARCHITECTS & PLANNERS

Jackson Park Habitat and History Integration for Community Asset Renewal Chicago, IL

More than a century after the 1895 redesign by Olmsted, Olmsted and Eliot addressing the exposition brownfield, Jackson Park exhibited diminished integrity, ecology and community value. With habitat restoration project funding, an interdisciplinary team embraced the opportunity to simultaneously achieve preservation and ecology approvals, uplifting park land and waterscapes to serve a distressed neighborhood. Community members identified access and safety concerns of blocked views and fragmented circulation. Seeking inclusivity and equity, haul roads and overlooks, designed in Olmsted character, provided construction and management access, remaining for community uses. The work specified 74 native groupings of resilient, adaptable plants addressing climate change vectors, habitat enrichment, historic landscape character, and perceived safety goals together.

Completed in 2019, flora and fauna are thriving. The park welcomes users along the lagoons and dunes today. Having transformed community perceptions, substantially increased use is obvious at this inclusive, sustainable and resilient community asset. As a result of this project, Jackson Park enhances Chicago Southside daily life as an urban park of scenic beauty and ecological richness for broad public enjoyment. ■

Project Team: Patricia M. O'Donnell, FASLA, AICP, F. US/ICOMOS, Preservation Landscape Architect. Peter F. Viteretto, PLA, ASLA. Project Manager, Gregory Wade DeVries, PLA, ASLA, Thomas Helmkamp, ASLA, HERITAGE LANDSCAPES LLC; Robbie Silwinski, Botanist, Faye Leffler, LRC, Civil Engineer Joseph Grgic, Project Engineer, Frank Veraldi, Fish Biologist US ARMY CORPS OF ENGINEERS, CHICAGO DISTRICT; Michael Lange, Planner, Julia Bachrach, Historian/Curator, Lauren Umek, Ecologist, CHICAGO PARK DISTRICT





WAGNER HODGSON LANDSCAPE ARCHITECTURE

Modern Retreat

Taghkanic, NY

This modern retreat and guest house integrates seamlessly into a hillside overlooking an expansive meadow in upstate New York. The site offered dramatic views not only from the home, but also of the home upon approach. A simple palette of native plants is used to integrate and provide contrast to the modern, angular lines of the home. An emphasis is placed on blurring the lines between interior and exterior spaces by using expansive glass and continuing the ground plane to the outdoors. The horizon of the infinity edge pool gestures out to the distant meadow. A native sedge was used to create a soft, green carpet, fulfilling the clients desire for no lawn. Outdoor lighting adds to the drama of the site and architecture.

Project Team: Hariri & Hariri Architects, Thom Filicia Inc., MJ Larkin Co., Twin Brook Gardens





HERITAGE LANDSCAPES LLC, PRESERVATION LANDSCAPE ARCHITECTS & PLANNERS

Niagara Falls State Park Riverway

Niagara Falls, NY

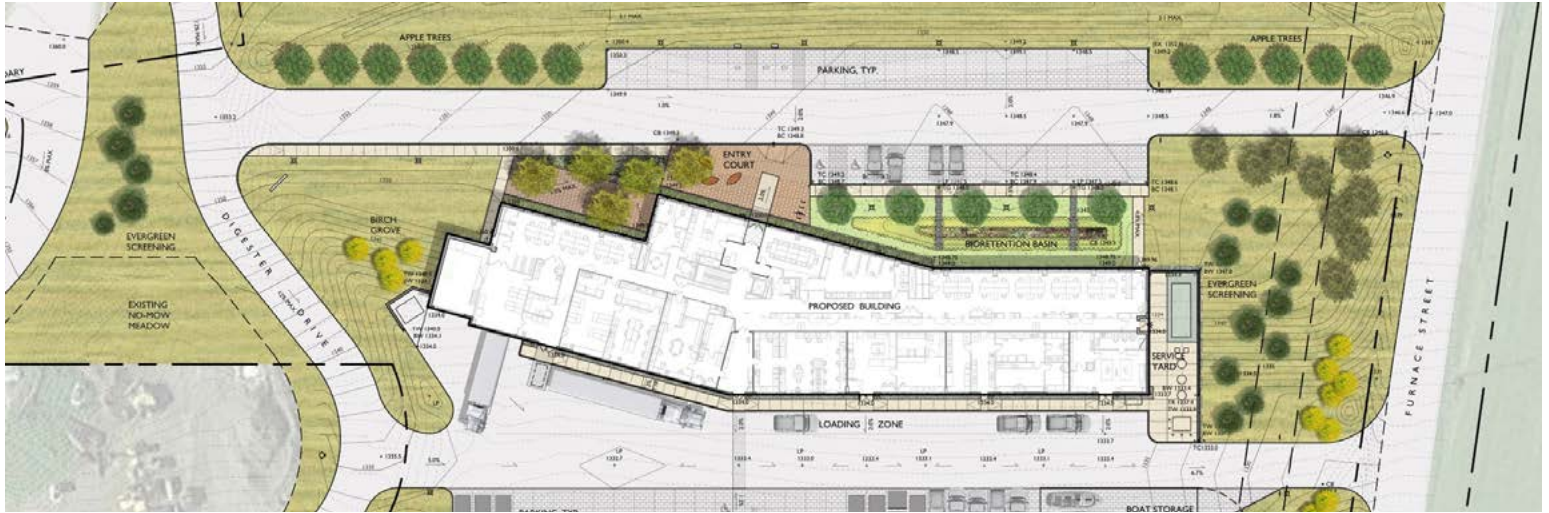
This project sought to replace the Robert Moses Parkway, built on fill along the Niagara River Rapids in the mid-twentieth century, with a riverfront park in the character of the Olmsted and Vaux 1880s design for the Riverway and adjacent Niagara Falls Reservation. A formal, double tree allee frames the entry drive to the City of Niagara Falls. The new roundabout improves city and park entry while the single lane access drives is gracefully curved and graded to fit into the landscape. The linear riverfront park connects at several points to the adjacent neighborhood and downtown. Designed by Heritage Landscapes, the park land character reflects Olmsted and Vaux principals of overlooks, framed views, graceful landforms, and paths set at varying elevations with seating areas. The integrated parking bays with interpretive signage welcome visitors. Tree, shrub, wildflower and wetland plantings shape spaces while the new settling pond wetland cleanses storm water runoff and fishing pond offers universal access for community use. Completed in 2017 the Riverway Park redesign is witnessing significant community and visitor uses and enjoyment.

Project Team: Jeffrey Lebsack, PE, Team Leader, Project Manager, MOTT MACDONALD

Brit G. Basinger, ASLA, Project Principal, entry walls, lighting, signage CHAZEN COMPANIES

Virginia L. Ursini, QEP, Sr. Environmental Scientist, YS environmental approvals WATTS ARCHITECTURE & ENGINEERING





WAGNER HODGSON LANDSCAPE ARCHITECTURE

Vermont Agricultural & Environmental Laboratory

Randolph, VT

Wagner Hodgson worked closely with the project team to site this, 38,000 SF laboratory on a 13 acre, sloping agricultural site in central Vermont. The site was chosen partly for its central location to provide services to all Vermonters and to encourage collaboration with students and faculty of nearby Vermont Technical College. The new facility is integrated into the hillside, mid-slope to minimize view impacts and to separate functions between the upper floor which largely open to the public and the lower floor which is private support functions. A number of LID techniques are implemented into the site plan including permeable pavers and rain gardens.

Project Team: Vermont Department of Buildings & General Services, State Colleges of Vermont, Cannon Design, VHB







JULIE MOIR MESSERVY DESIGN STUDIO

Blue Moon Farm Westminster, VT

Originally a working farm, this residential property was redesigned as a modern recreational landscape. The design utilizes timeless building materials and repurposed garden plants to preserve a rural, rustic aesthetic while increasing the functionality of the landscape for a family of five.

Project Team: LANDSCAPE CONTRACTOR: Terrigenous Landscape Architecture; ARCHITECT: Greenberg Associates Architects; GARDEN INSTALLATION: Vermont Fine Gardeners and Hartmann Tree and Garden; BUILDING CONTRACTOR: Jonathan Klein Builders





JACK ROSSI, LANDSCAPE ARCHITECTURE

Lottery Hill

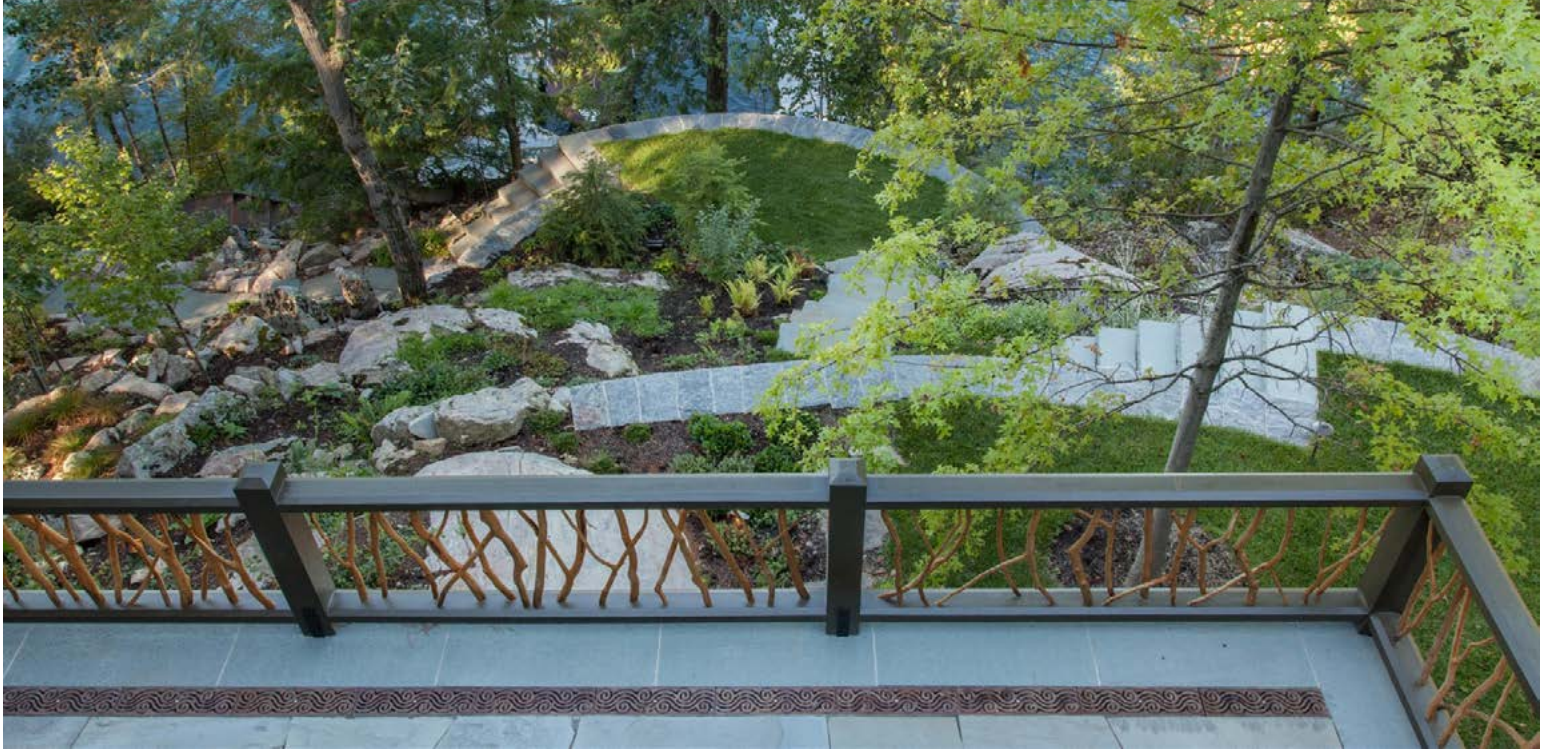
Woodstock, VT

This stately brick Federal house was built in 1817 with the clapboard ell and adjacent 5-story barn later additions. The 120-acre property and home was owned and occupied by actor Michael J. Fox and family through the early 1990's but was subsequently neglected until the new owner purchased it in 2014.

The existing landscape was overgrown, lacked coherency, and cut off views to the surrounding fields and wooded hills. Through the introduction of new structural and planting elements, including fieldstone walls, brick and granite terraces, hedges, and a hawthorn allee, the new design reconnects the house, barn, and guest cottage to each other and the broader landscape, while restoring a comprehensive order to the site.

Project Team: LANDSCAPE CONTRACTOR: ArborScape Inc., MASONRY CONTRACTOR: Olde World Masonry, TanCreti Stone Masonry; BUILDER: Dunne and Calder Constriction Co.; IRRIGATION: Clement Irrigation.





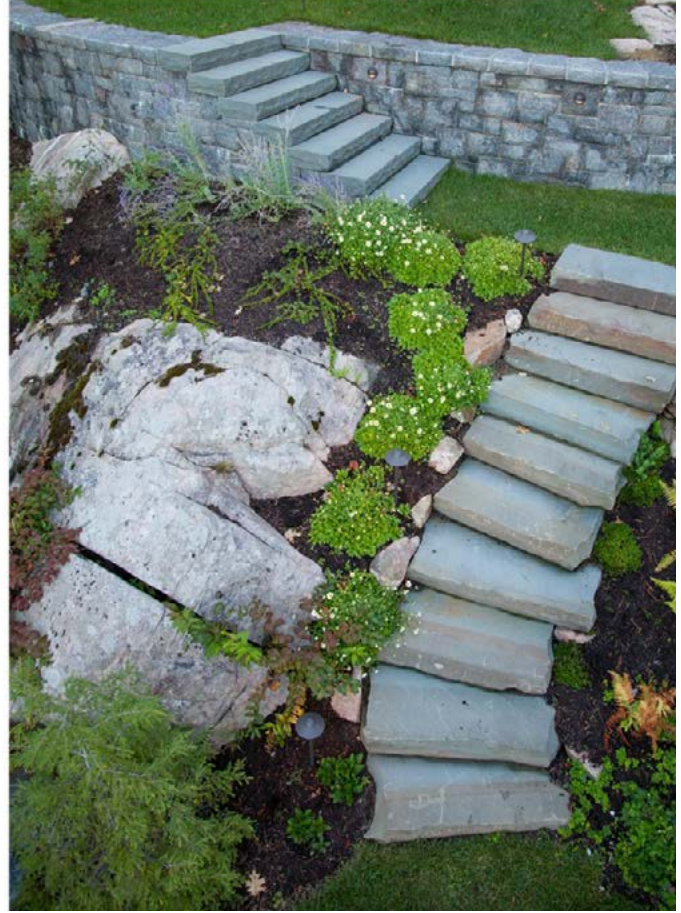
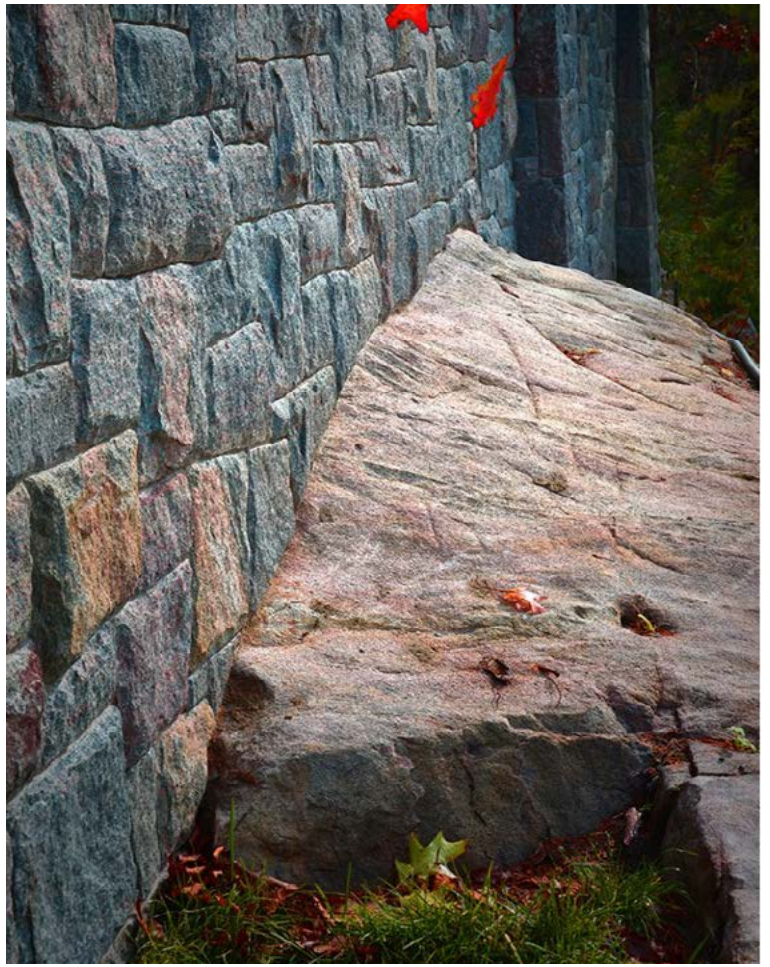
T.J. BOYLE ASSOCIATES

Lake George Residence

Putnam, NY

This existing residence along the northeastern shore of Lake George included little usable outdoor space and a challenging hillside to navigate between the home and lake. The design uses a combination of retaining walls, terraces, stairs, and boardwalks to create a series of intimate spaces while safely traversing the rugged 50-foot elevation change down to the lake. A main terrace directly off the newly finished lower level provides a seamless connection between interior and exterior space. Use of native materials and vernacular detailing create an Adirondack retreat for the homeowners, while adhering to strict Adirondack Park Agency requirements.

Project Team: Red House Building, Church Hill Landscapes, Shawn Leonard - Architect





WAGNER HODGSON LANDSCAPE ARCHITECTURE

Aerie Point Residence

Panton, VT

Wagner Hodgson worked closely with the owner and design team to reclaim this 110-acre estate into a summer compound for a family from Texas. The 1920's main house was fully renovated and expanded to take center stage on the point of the property. Over time views to the lake had been diminished due to invasive plants and lack of forest management. Working with an arborist we selectively edited the vegetation and invasive shoreline plants exposing many of the mature native trees that had been overtaken. Native shoreline plants were planted along the shore for soil stabilization and wildlife habitat. The existing mature trees were then limbed-up to open the understory view and provide a scrim of privacy for the estate. An abandoned farmhouse on the property was divided into 2 guest houses which were positioned in different parts of the property with commanding views of Arnold Bay and Lake Champlain. An existing swimming pool was renovated and a pool house was added. An existing stream through the property was improved with 4 stormwater bays to catch sediment from upstream farms and filter the stormwater before it enters the lake. The stream was landscaped with native wetland plants.

Project Team: Truex Cullins Architects, Birdseye Builders





SE GROUP

Montpelier Union Elementary School Playground

Montpelier, VT

The Union Elementary School Playground project re-envisioned the playground as a nature-based play and education space for the students and surrounding neighborhood community. The play features were integrated into the site design to take advantage of and manipulate the existing landform by regrading the site to define the outdoor play spaces. The project also improved site accessibility and created opportunities to handle stormwater in visually apparent and educational stormwater infrastructure including rain gardens and gravel wetlands. This project sought to inspire students to play and learn through all aspects of the site.

Project Team: Engineering Ventures, Black River Design, Stonorov Workshop, The Johnson Company/VHB





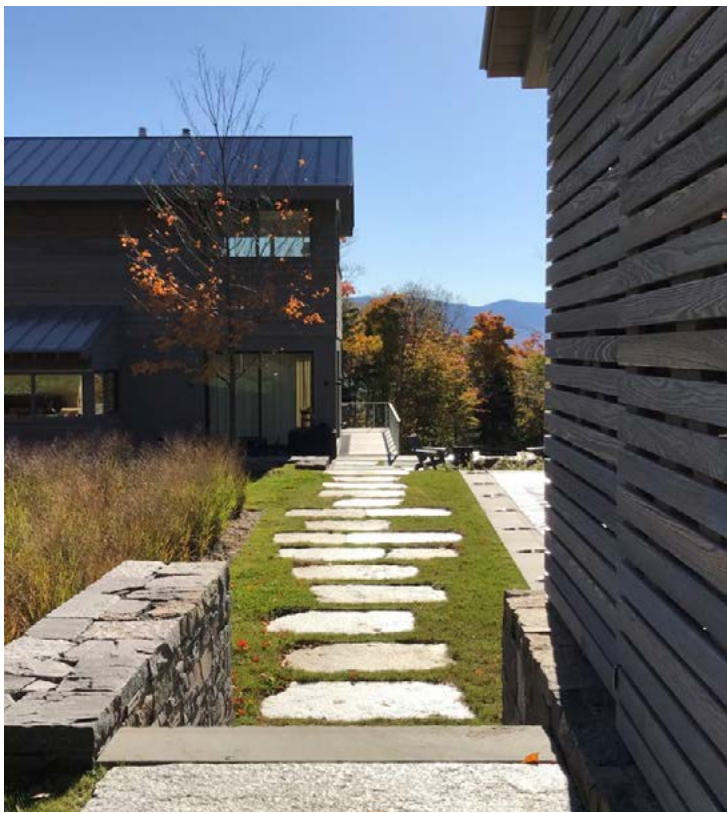
WAGNER HODGSON LANDSCAPE ARCHITECTURE

Switchback Modern

Stowe, VT

Located atop a steep hillside at the end of a long drive, surrounded by woodland and farmland that the clients are helping to conserve, this south-facing site is an ideal location for an active family that spends time outdoors in all seasons. Working closely with the architect, we sited the home, garage/guesthouse, pool, and music studio/pool house to take advantage of solar orientation, views, topography, and natural character, seamlessly integrating architecture and landscape. Details of stonework and planting are inspired by and blend into the surrounding ledge outcroppings and the native forest ecosystem, all with an understated and modern aesthetic that creates a series of comfortable and livable outdoor/indoor spaces.

Project Team: Foster Associates, Patterson & Smith Construction, Walker Construction, JKB Stone Designs, Greenhaven Garden and Nursery





Ashbery

landscapeforms®

Nadene Worth

800-430-6206 x 1325

nadene@landscapeforms.com

Designed by Robert A.M. Stern.

DESIGN. CULTURE. CRAFT.



**TROWEL
TRADES
SUPPLY**
A GHS COMPANY



SPRING 2021

For Denver, smart waste receptacles mean smart savings.



VICTOR STANLEY RELAY™

STREET LEVEL SENSING™ & WASTE CONTROL SERVICE

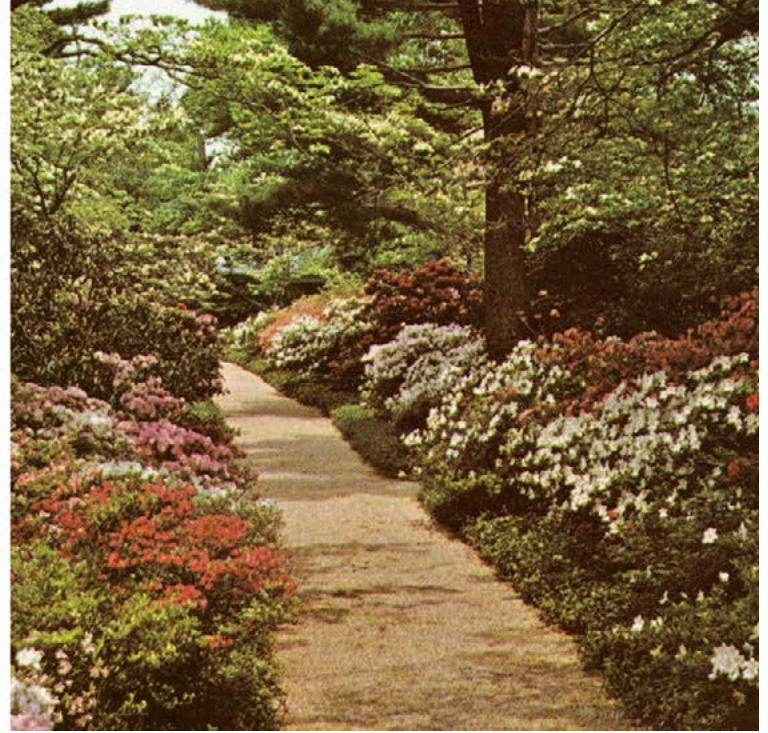
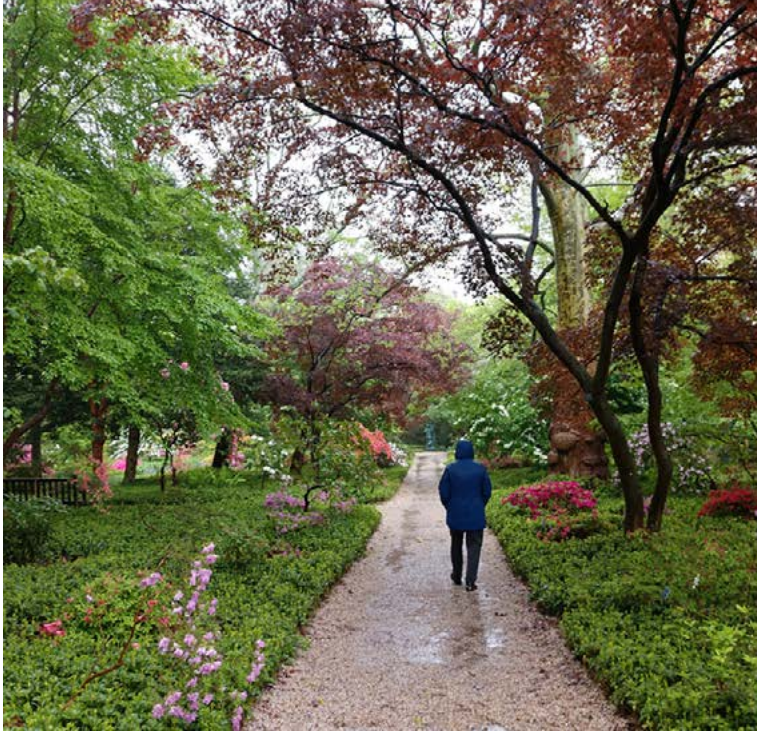
Bins equipped with Relay sensors provide the city of Denver with accurate, real-time data on fill level, area environmental conditions, pedestrian traffic and much more. This means more efficient collection, saving the city time and money on fewer unnecessary stops, and providing valuable insights for future planning.

What can we do for your city?

Contact Andrew Hosmer at andrewh@victorstanley.com

VICTOR  STANLEY®

VICTORSTANLEY.COM



HERITAGE LANDSCAPES LLC, PRESERVATION LANDSCAPE ARCHITECTS & PLANNERS

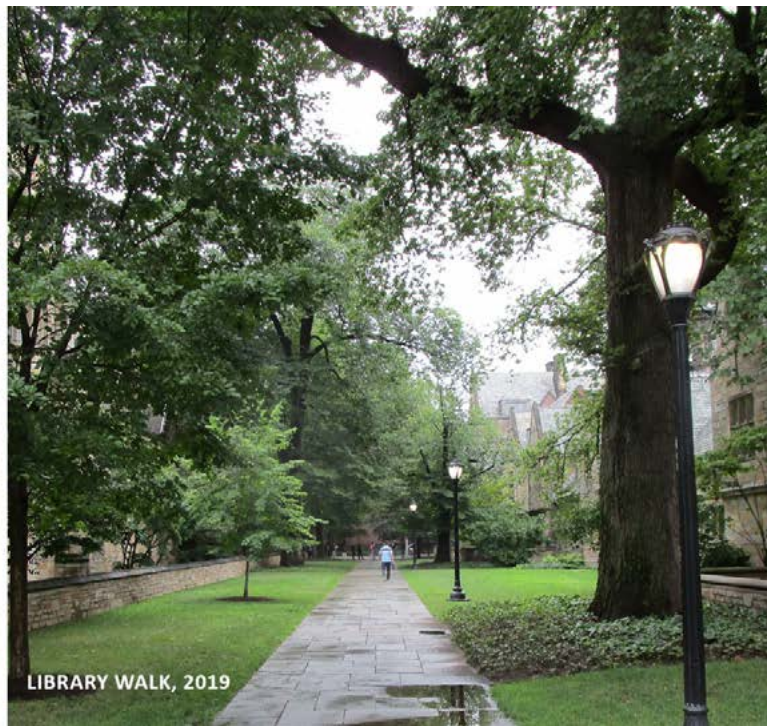
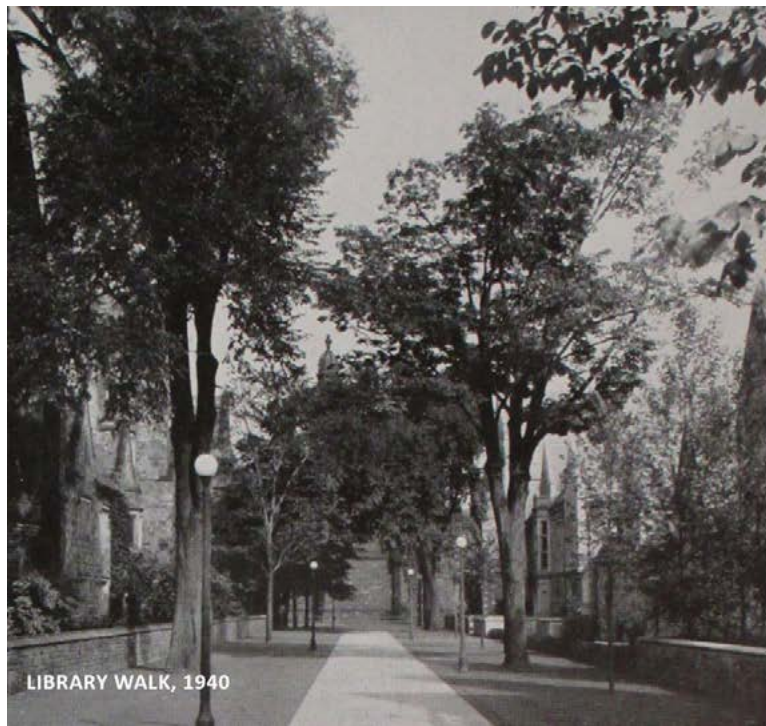
Planting Fields Cultural Landscape Report

Oyster Bay, Long Island, NY

The Planting Fields Cultural Landscape Report, 2019, details the future preservation and improved use and management of this historically significant landscape of a largely intact Country Place estate. Planting Fields' historical landscape significance is well-established with listing in the National Register of Historic Places in 1979. Research revealed the successive design contributions of James Greenleaf, A. Robeson Sargent, Guy Lowell, and Frederick Dawson of Olmsted Brothers, distinguishing the landscape as a master work. Thorough analysis of design intent and continuity and change identified integrity and degradation. CLR treatment seeks to restore and rehabilitate Olmsted Brothers' character bringing contemporary needs and uses into harmony. Recommendations to enriched ecology of meadow and woodland shape Planting Fields as a sustainable, resilient and inclusive public asset and fostering deeper engagement of a diverse visitorship and enhancing place-based learning. Resilience to climate change is addressed through planting renewal and management. Implementation is already underway with a strengthened commitment to collaboration between the public-private partnership of the Planting Fields Foundation and New York State Parks fostered through CLR development.

Project Team: Christopher Flagg, Chief; Bureau of Historic Site and Park Services Division of Historic Preservation; NYS OPRHP



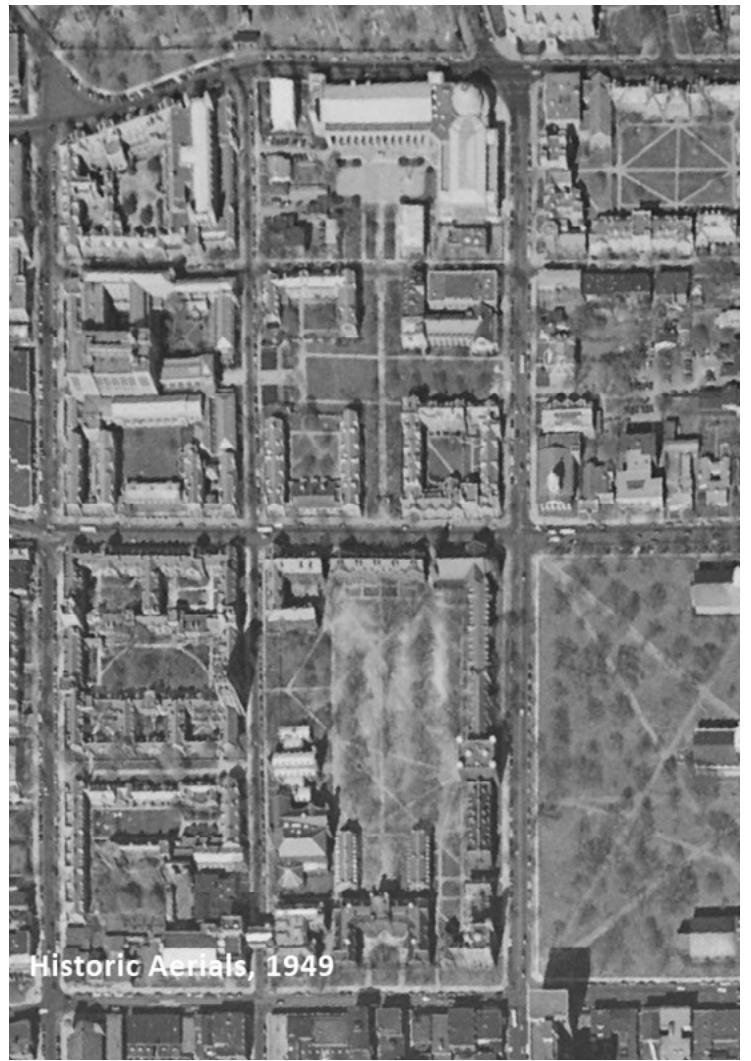
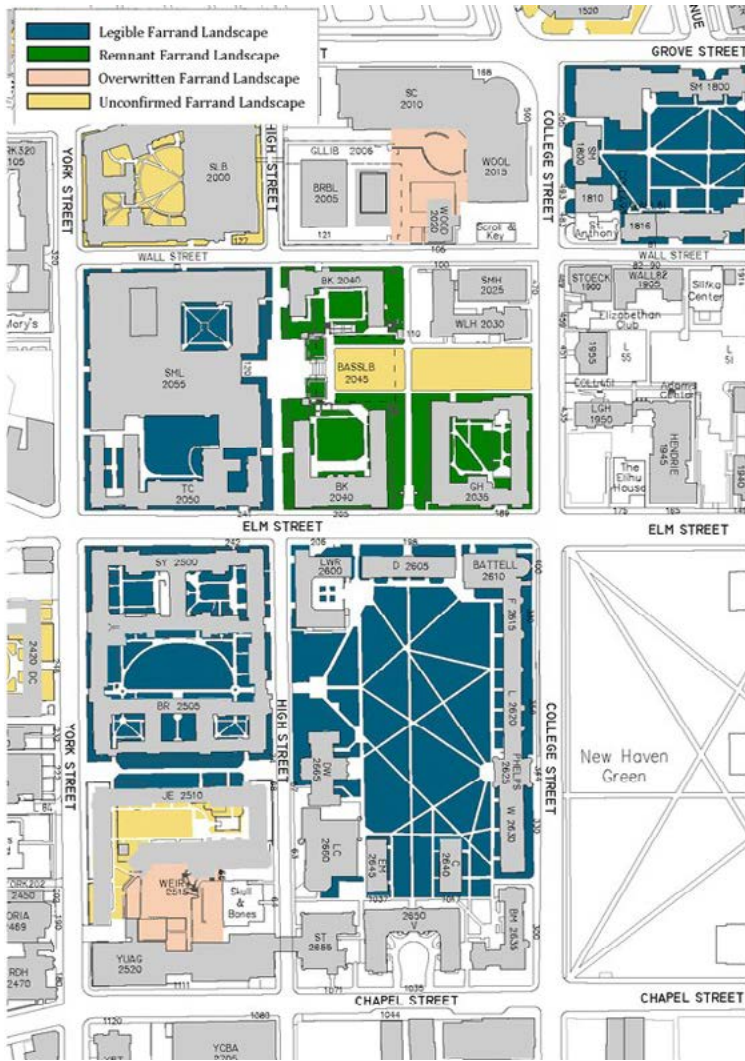


HERITAGE LANDSCAPES LLC, PRESERVATION LANDSCAPE ARCHITECTS & PLANNERS

Yale Campus Farrand Cultural Landscape Study New Haven, CT

Completed in December 2019, this study documented and detailed the 25-year tenure of Beatrix Farrand, first woman trained landscape architect in the USA and ASLA founding member. The project sought to understand her campus-shaping legacy at Yale University from 1930 to 1945. Corroboration across archival primary and secondary documentation affirmed Farrand's previously little-known contributions, shaping 24 landscapes and possibly 12 more, influencing layout, grading, walls, circulation, furnishings, as well as plantings. Research and analysis revealed Farrand's vocabulary of character-defining features. Comparative study of historic documentation and field work categorized the integrity of campus landscape as legible, remnant, overwritten. The findings form a basis for future project design and landscape management guidelines with an intent to strengthen cohesion and renew campus character guided by Farrand's character-defining features. Implementation of new campus landscape guidance is already underway.

Project Team: Judith Tankard, Historian and Author





TERRIGENOUS LANDSCAPE ARCHITECTURE

Chester Village Canopy Management Plan

Chester, VT

The intent of the Chester Village Canopy Management Plan was to assess the condition of the existing trees along the streets in the village center, assemble a maintenance and planting plan, and then share those findings with the community.

Project Team: Chester Townscape Committee, SWCRPC, Beautification Committee of Chester



SE GROUP

Enosburg Falls Vital Village Master Plan

Enosburg Falls, VT

The Enosburg Falls Vital Village Master Plan provides an actionable implementation strategy, identifying development opportunities around the recreation tourism economy, and improved pedestrian-friendly streetscape, and a unified community identity. The Vital Village Master Plan was also recently recognized as the Vermont Planners Association's 2020 Plan of the Year.

Project Team: Northwest Regional Planning Commission, Doug Kennedy Advisors, Stantex





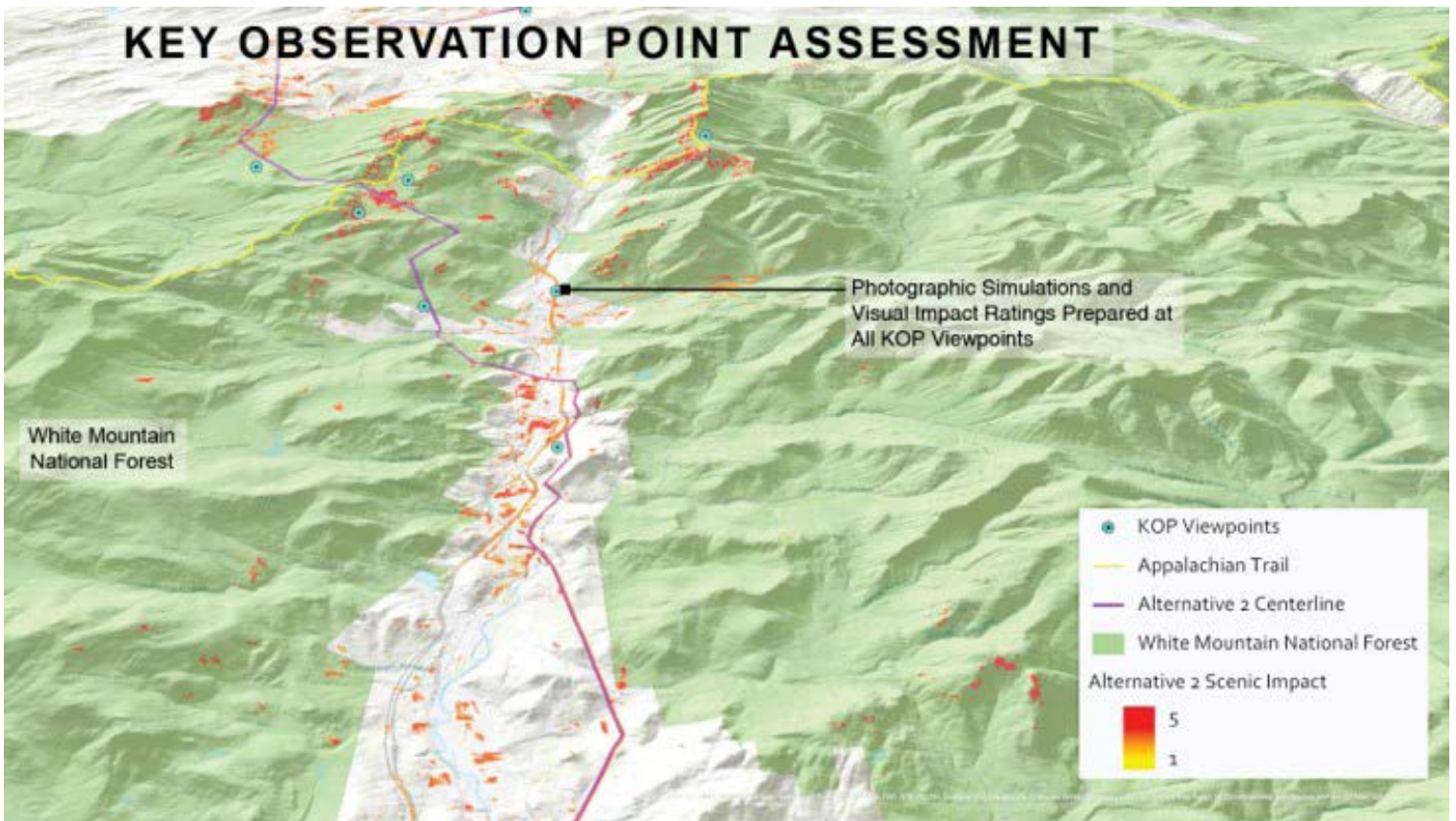
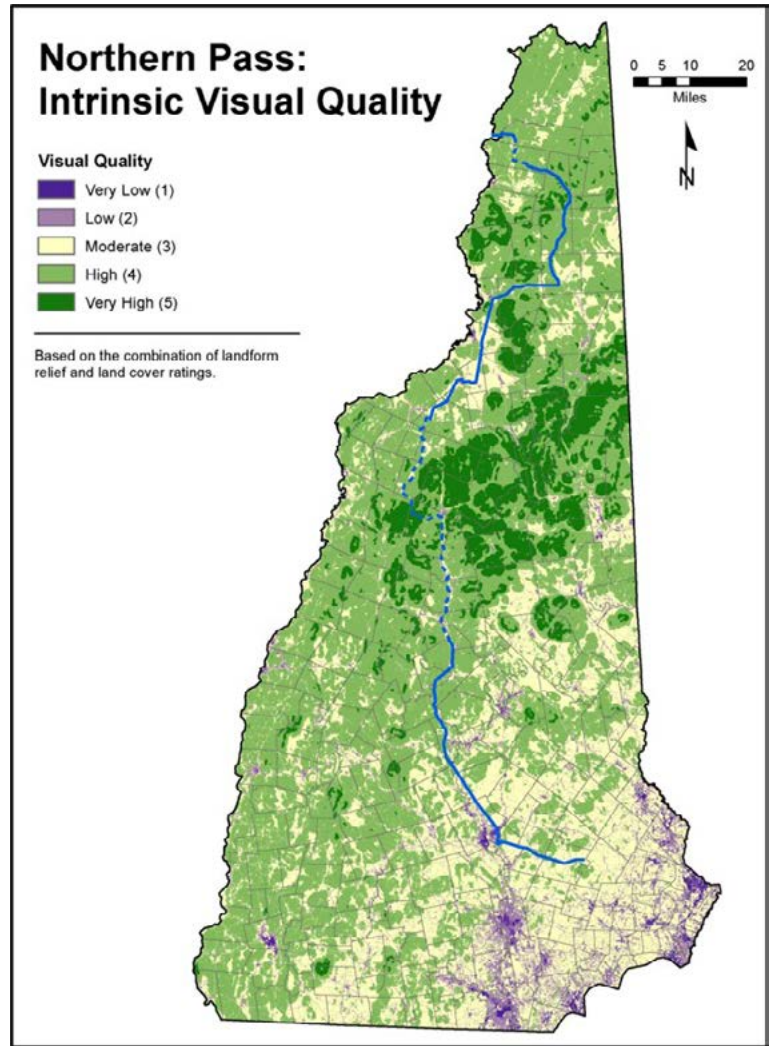
T.J. BOYLE ASSOCIATES

Northern Pass Visual Impact Assessment

New Hampshire

The Northern Pass Transmission Project became Northern New England's major environmental controversy during the last half of the 2010s, due in no small measure to the potential visual impacts. The visual impact assessment demonstrates a scientifically reliable and valid method using systematic field observation, photo simulation assessment at key observation points, and a GIS landscape assessment model. This new approach to VIA was reported in three peer-reviewed articles that have become permanent contributions to the indexed scientific literature.

Project Team: SE Group



PERMEABLE

Without Compromise



UNILOCK[®]
PAVERS & WALLS

UNILOCK.COM
1-800-UNILOCK

CALL FOR MORE INFORMATION AND SAMPLES TODAY

720 Collection



Enhance your outdoor living experience



MAGLIN[™]
Site Furniture

LOW IMPACT PRODUCTS *for* HIGH PERFORMANCE LANDSCAPES



STABILIZED STONEDUST®
TRUNKLINE TRAIL



BEACH NOURISHMENT SOLUTIONS
NEWBURYPORT BEACH



CU STRUCTURAL SOIL®
MAIN STREET USA



ENGINEERED SOILS
HARVARD CAMPUS



ATHLETIC FIELD AND
GOLF COURSE MATERIALS

BIORETENTION SOILS • FIBER SOILS • ROOTZONES • STABILIZED STONEDUST
CU STRUCTURAL SOIL • INFIELD MIX • GREEN ROOF MEDIA



Experience. Quality. Consistency.

CONTACT US FOR PRODUCT SPECIFICATIONS,
TESTING RESULTS, PROJECT ANALYSIS,
AND PERSONALIZED QUOTES.

JEFF TOOMEY
JEFF@READCUSTOMSOILS.COM
603.235.8420

READCUSTOMSOILS.COM





ASLA VERMONT